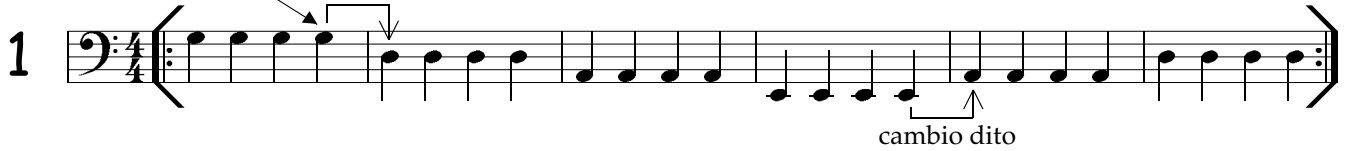
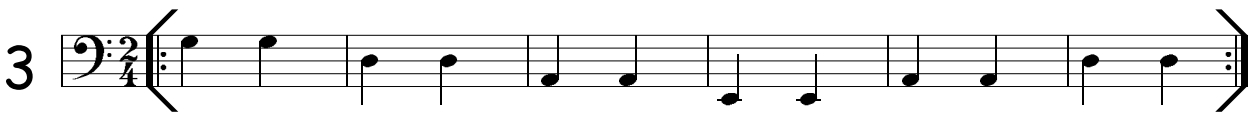


# Esercizi mano destra

Iniziare sia col dito 1 (indice) che col 2 (medio). Alternare sempre le dita eccetto se si procede su una corda più grave che si deve suonare: es. E' importantissimo effettuare i ritornelli ripetutamente!

1 

2 

3 

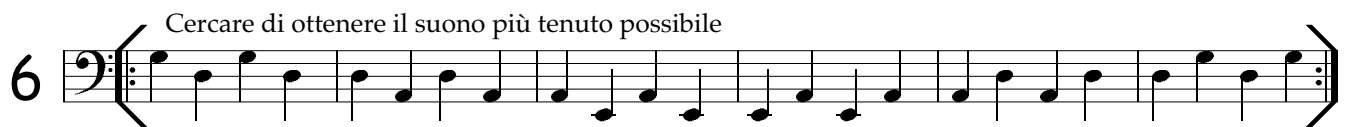
4 


fermare la corda nelle pause con la mano sinistra sfiorando con tutte le 4 dita

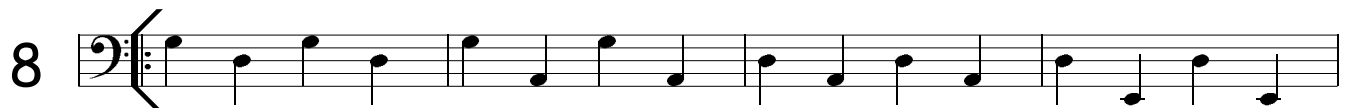
5 

Anche qui fermare le corde ad ogni cambio (es. SOL > RE) evitando che entrambe suonino.



6 Cercare di ottenere il suono più tenuto possibile 

7 

8 



# Esercizi mano sinistra

(mano destra completamente rilassata e libera!)

Martellare con scatto e determinazione le corde; non utilizzare troppa pressione, ma più la velocità d'arrivo.





Esercizi sulle prime facili tonalità.

## DO maggiore

1  Musical notation for exercise 1, first staff. Bass clef, 4/4 time signature. The staff contains a sequence of notes: C4, D4, E4, F4, G4, A4, B4, C5, followed by a whole rest, then D4, E4, F4, G4, A4, B4, C5, followed by a whole rest, then D4, E4, F4, G4, A4, B4, C5, followed by a whole rest.

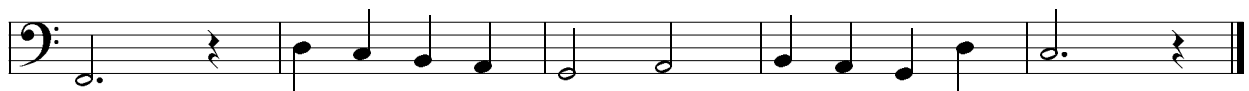
 Musical notation for exercise 1, second staff. Bass clef. The staff contains a sequence of notes: C4, D4, E4, F4, G4, A4, B4, C5, followed by a whole rest, then D4, E4, F4, G4, A4, B4, C5, followed by a whole rest, then D4, E4, F4, G4, A4, B4, C5, followed by a whole rest. The text "scala di DO" is written above the staff.

 Musical notation for exercise 1, third staff. Bass clef. The staff contains a sequence of notes: C4, D4, E4, F4, G4, A4, B4, C5, followed by a whole rest, then D4, E4, F4, G4, A4, B4, C5, followed by a whole rest, then D4, E4, F4, G4, A4, B4, C5, followed by a whole rest, then D4, E4, F4, G4, A4, B4, C5, followed by a whole rest.

 Musical notation for exercise 1, fourth staff. Bass clef. The staff contains a sequence of notes: D4, E4, F4, G4, A4, B4, C5, followed by a whole rest, then D4, E4, F4, G4, A4, B4, C5, followed by a whole rest, then D4, E4, F4, G4, A4, B4, C5, followed by a whole rest, then D4, E4, F4, G4, A4, B4, C5, followed by a whole rest.

2  Musical notation for exercise 2, first staff. Bass clef. The staff contains a sequence of notes: C4, D4, E4, F4, G4, A4, B4, C5, followed by a whole rest, then D4, E4, F4, G4, A4, B4, C5, followed by a whole rest, then D4, E4, F4, G4, A4, B4, C5, followed by a whole rest.

 Musical notation for exercise 2, second staff. Bass clef. The staff contains a sequence of notes: D4, E4, F4, G4, A4, B4, C5, followed by a whole rest, then D4, E4, F4, G4, A4, B4, C5, followed by a whole rest, then D4, E4, F4, G4, A4, B4, C5, followed by a whole rest, then D4, E4, F4, G4, A4, B4, C5, followed by a whole rest.


 Musical notation for exercise 2, third staff. Bass clef. The staff contains a sequence of notes: E4, F4, G4, A4, B4, C5, followed by a whole rest, then D4, E4, F4, G4, A4, B4, C5, followed by a whole rest, then D4, E4, F4, G4, A4, B4, C5, followed by a whole rest, then D4, E4, F4, G4, A4, B4, C5, followed by a whole rest.

3  Musical notation for exercise 3, first staff. Bass clef. The staff contains a sequence of notes: F4, G4, A4, B4, C5, followed by a whole rest, then D4, E4, F4, G4, A4, B4, C5, followed by a whole rest, then D4, E4, F4, G4, A4, B4, C5, followed by a whole rest, then D4, E4, F4, G4, A4, B4, C5, followed by a whole rest.

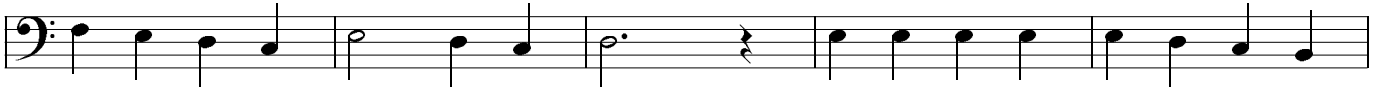
 Musical notation for exercise 3, second staff. Bass clef. The staff contains a sequence of notes: G4, A4, B4, C5, followed by a whole rest, then D4, E4, F4, G4, A4, B4, C5, followed by a whole rest, then D4, E4, F4, G4, A4, B4, C5, followed by a whole rest, then D4, E4, F4, G4, A4, B4, C5, followed by a whole rest.

 Musical notation for exercise 3, third staff. Bass clef. The staff contains a sequence of notes: A4, B4, C5, followed by a whole rest, then D4, E4, F4, G4, A4, B4, C5, followed by a whole rest, then D4, E4, F4, G4, A4, B4, C5, followed by a whole rest, then D4, E4, F4, G4, A4, B4, C5, followed by a whole rest.

4  Musical notation for exercise 4, first staff. Bass clef. The staff contains a sequence of notes: B4, C5, followed by a whole rest, then D4, E4, F4, G4, A4, B4, C5, followed by a whole rest, then D4, E4, F4, G4, A4, B4, C5, followed by a whole rest, then D4, E4, F4, G4, A4, B4, C5, followed by a whole rest.

 Musical notation for exercise 4, second staff. Bass clef. The staff contains a sequence of notes: C5, followed by a whole rest, then D4, E4, F4, G4, A4, B4, C5, followed by a whole rest, then D4, E4, F4, G4, A4, B4, C5, followed by a whole rest, then D4, E4, F4, G4, A4, B4, C5, followed by a whole rest.

5



6



II



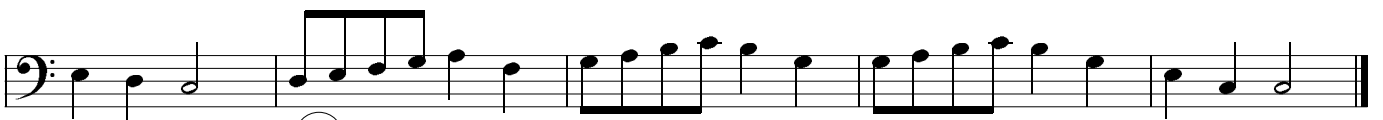
7



8



9



II



5  Musical staff 5, first line. Bass clef, one flat. Notes: G2, A2, B2, C3, D3, E3, F3, G3, A3, B3, C4, D4, E4, F4, G4, A4, B4, C5.

 Musical staff 5, second line. Bass clef, one flat. Notes: D4, E4, F4, G4, A4, B4, C5, D5, E5, F5, G5, A5, B5, C6, D6, E6, F6, G6, A6, B6, C7.

 Musical staff 5, third line. Bass clef, one flat. Notes: D4, E4, F4, G4, A4, B4, C5, D5, E5, F5, G5, A5, B5, C6, D6, E6, F6, G6, A6, B6, C7.

6  Musical staff 6, first line. Bass clef, one flat. Notes: G2, A2, B2, C3, D3, E3, F3, G3, A3, B3, C4, D4, E4, F4, G4, A4, B4, C5.

 Musical staff 6, second line. Bass clef, one flat. Notes: D4, E4, F4, G4, A4, B4, C5, D5, E5, F5, G5, A5, B5, C6, D6, E6, F6, G6, A6, B6, C7.

 Musical staff 6, third line. Bass clef, one flat. Notes: D4, E4, F4, G4, A4, B4, C5, D5, E5, F5, G5, A5, B5, C6, D6, E6, F6, G6, A6, B6, C7.

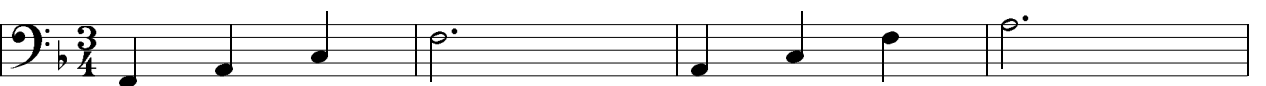
 Musical staff 6, fourth line. Bass clef, one flat. Notes: D4, E4, F4, G4, A4, B4, C5, D5, E5, F5, G5, A5, B5, C6, D6, E6, F6, G6, A6, B6, C7.

7  Musical staff 7, first line. Bass clef, one flat. Notes: G2, A2, B2, C3, D3, E3, F3, G3, A3, B3, C4, D4, E4, F4, G4, A4, B4, C5.

 Musical staff 7, second line. Bass clef, one flat. Notes: D4, E4, F4, G4, A4, B4, C5, D5, E5, F5, G5, A5, B5, C6, D6, E6, F6, G6, A6, B6, C7.

 Musical staff 7, third line. Bass clef, one flat. Notes: D4, E4, F4, G4, A4, B4, C5, D5, E5, F5, G5, A5, B5, C6, D6, E6, F6, G6, A6, B6, C7.

 Musical staff 7, fourth line. Bass clef, one flat. Notes: D4, E4, F4, G4, A4, B4, C5, D5, E5, F5, G5, A5, B5, C6, D6, E6, F6, G6, A6, B6, C7.

8  Musical staff 8, first line. Bass clef, one flat, 3/4 time signature. Notes: G2, A2, B2, C3, D3, E3, F3, G3, A3, B3, C4, D4, E4, F4, G4, A4, B4, C5.

 Musical staff 8, second line. Bass clef, one flat, 3/4 time signature. Notes: D4, E4, F4, G4, A4, B4, C5, D5, E5, F5, G5, A5, B5, C6, D6, E6, F6, G6, A6, B6, C7.

# SOL maggiore



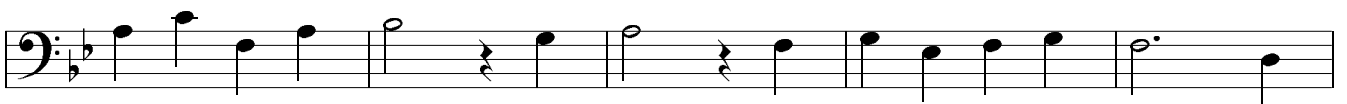
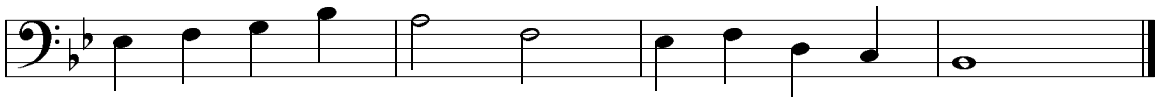
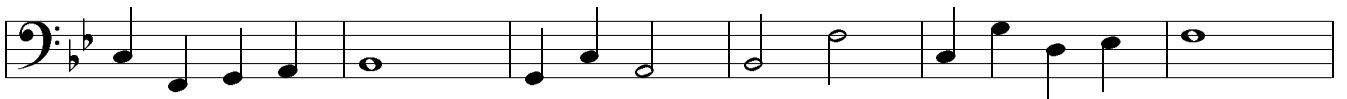
6

7

(alterazione)

8

# Sib maggiore





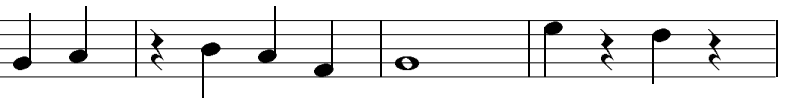
# RE maggiore

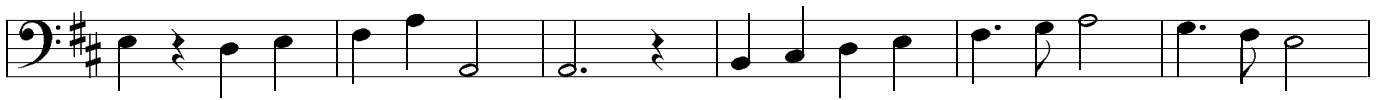
1  Musical notation for exercise 1, first staff. Bass clef, key signature of two sharps (F# and C#), 4/4 time signature. The staff contains a sequence of notes: D2, E2, F#2, G2, A2, B2, C#3, D3, E3, F#3, G3, A3, B3, C#4, D4.

 Musical notation for exercise 1, second staff. Bass clef, key signature of two sharps (F# and C#), 4/4 time signature. The staff contains a sequence of notes: D3, E3, F#3, G3, A3, B3, C#4, D4, E4, F#4, G4, A4, B4, C#5, D5.

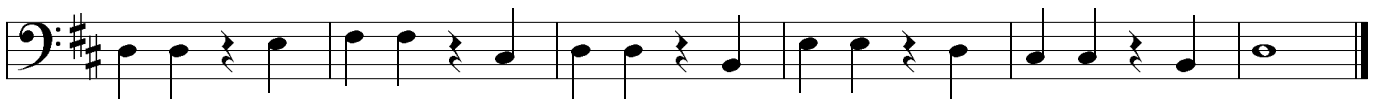
2  Musical notation for exercise 2, first staff. Bass clef, key signature of two sharps (F# and C#), 4/4 time signature. The staff contains a sequence of notes: D2, E2, F#2, G2, A2, B2, C#3, D3, E3, F#3, G3, A3, B3, C#4, D4.

 Musical notation for exercise 2, second staff. Bass clef, key signature of two sharps (F# and C#), 4/4 time signature. The staff contains a sequence of notes: D3, E3, F#3, G3, A3, B3, C#4, D4, E4, F#4, G4, A4, B4, C#5, D5.

3  Musical notation for exercise 3, first staff. Bass clef, key signature of two sharps (F# and C#), 4/4 time signature. The staff contains a sequence of notes: D2, E2, F#2, G2, A2, B2, C#3, D3, E3, F#3, G3, A3, B3, C#4, D4.

 Musical notation for exercise 3, second staff. Bass clef, key signature of two sharps (F# and C#), 4/4 time signature. The staff contains a sequence of notes: D3, E3, F#3, G3, A3, B3, C#4, D4, E4, F#4, G4, A4, B4, C#5, D5. Musical notation for exercise 3, third staff. Bass clef, key signature of two sharps (F# and C#), 4/4 time signature. The staff contains a sequence of notes: D3, E3, F#3, G3, A3, B3, C#4, D4, E4, F#4, G4, A4, B4, C#5, D5.

4  Musical notation for exercise 4, first staff. Bass clef, key signature of two sharps (F# and C#), 4/4 time signature. The staff contains a sequence of notes: D2, E2, F#2, G2, A2, B2, C#3, D3, E3, F#3, G3, A3, B3, C#4, D4.

 Musical notation for exercise 4, second staff. Bass clef, key signature of two sharps (F# and C#), 4/4 time signature. The staff contains a sequence of notes: D3, E3, F#3, G3, A3, B3, C#4, D4, E4, F#4, G4, A4, B4, C#5, D5. Musical notation for exercise 4, third staff. Bass clef, key signature of two sharps (F# and C#), 4/4 time signature. The staff contains a sequence of notes: D3, E3, F#3, G3, A3, B3, C#4, D4, E4, F#4, G4, A4, B4, C#5, D5.

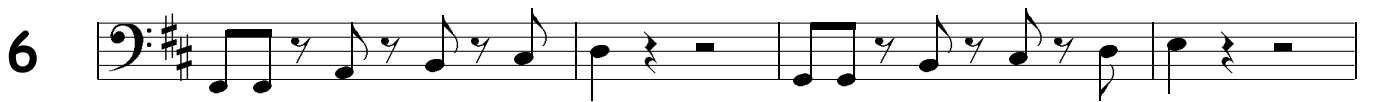
5 









6 







7 

